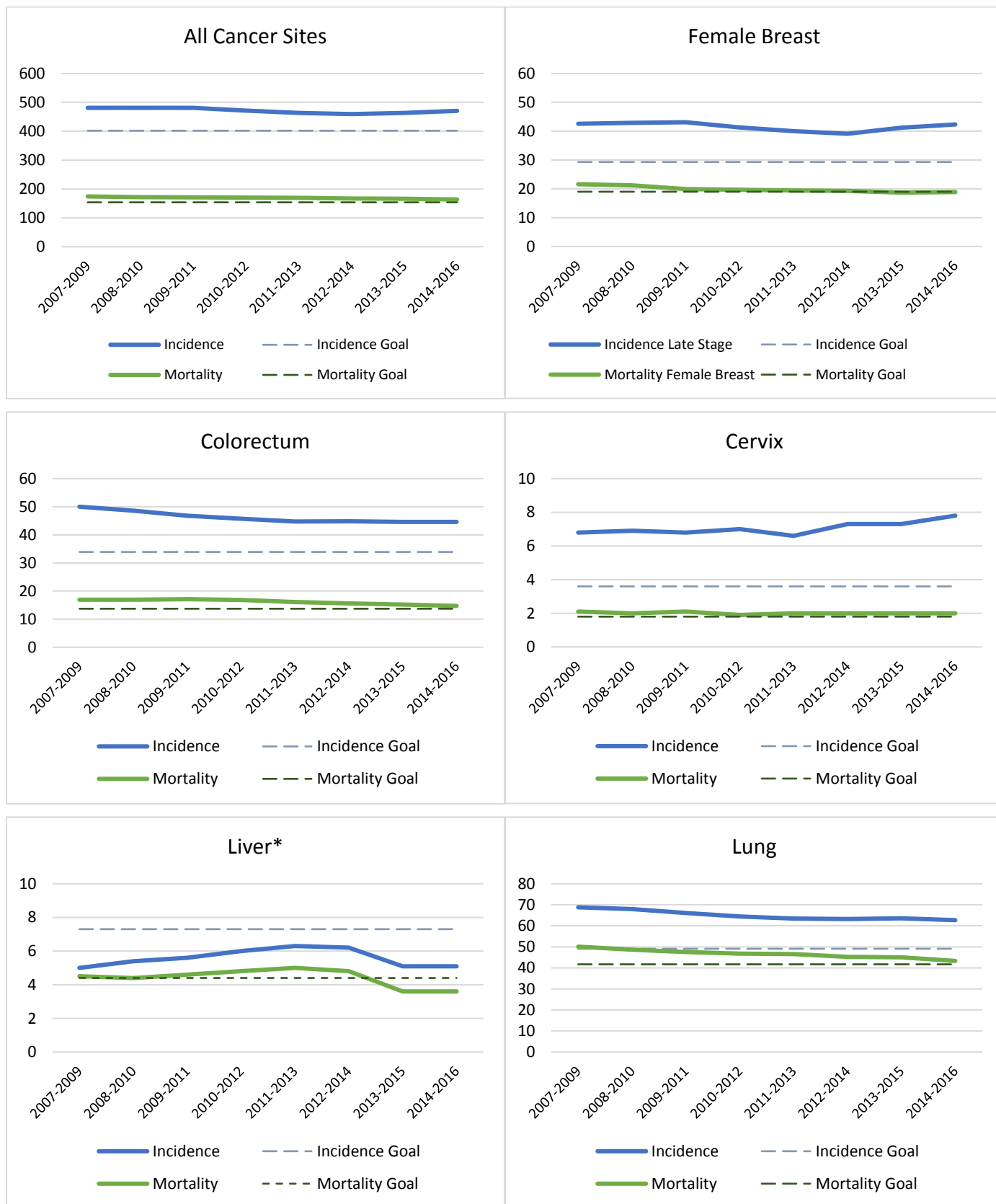
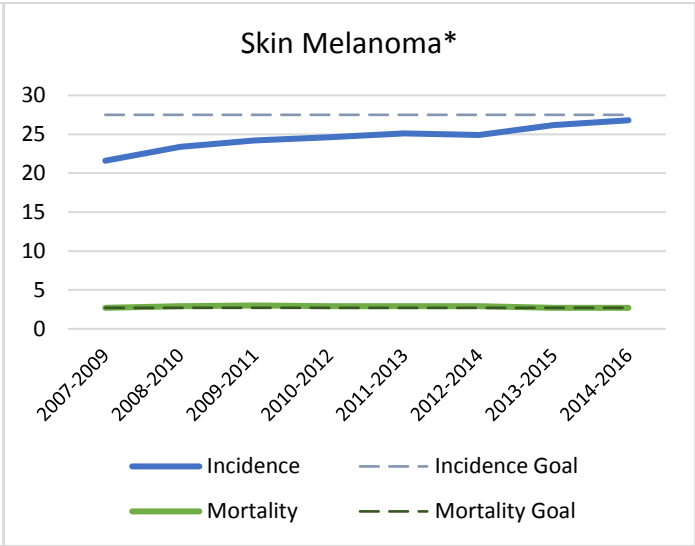
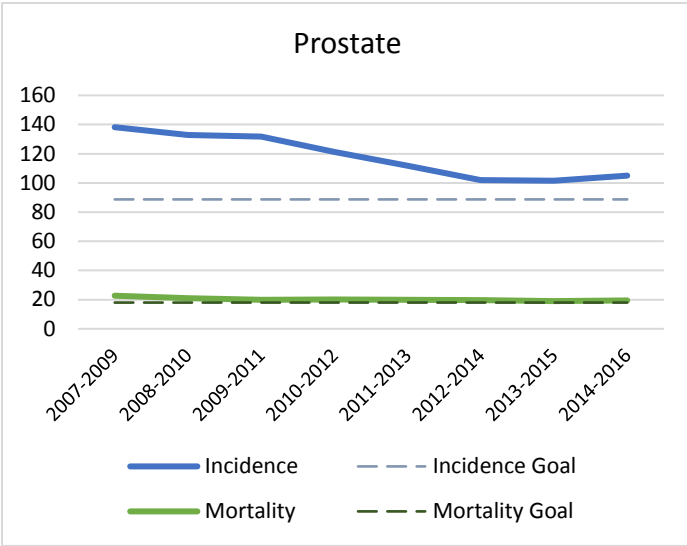


# Cancer incidence and mortality in Iowa and 2018-2022 Iowa Cancer Plan Goals

Cancer Incidence and Mortality Trends (Age-adjusted per 100,000; Source: State Health Registry)





\*Incidence of liver cancer and skin melanoma in Iowa has been on an upward trend. While the target goal is higher than the baseline, it is a reduction of the projected rate for the final reporting period.